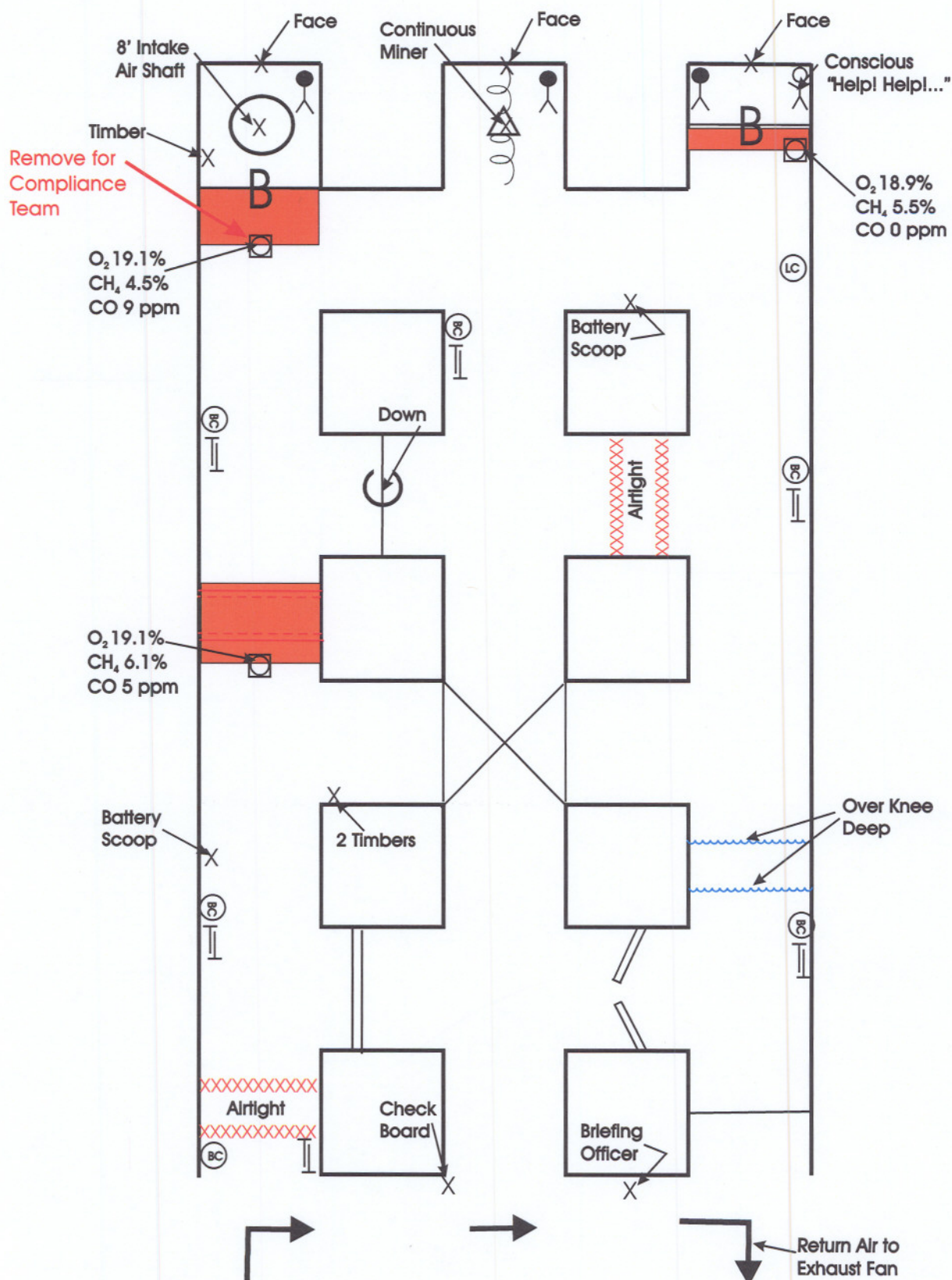


FOUR CORNERS MINE RESCUE CONTEST - 2010

 EXTENT OF GASES



FOUR CORNERS MINE RESCUE CONTEST APRIL 28, 2010

STATEMENT

Thank you for responding to our mine. I am _____, superintendent of the No. 1 Mine. We are not sure what happened. Crews entered the mine this morning and traveled to their sections and work locations. A loud noise and a rush of air were later noticed by the shift foreman, who was in the mine at the time. He called the control center and ordered a mine evacuation. A mine-wide evacuation order was transmitted over the mine's communication system. The check-in/check-out board indicates that 27 of the 31 miners in the mine at the time of the incident have arrived at the surface.

The missing miners were assigned to work on the 1st Right section. Mine rescue teams have gone into the mine and have explored as far into the section that they can. A fresh air base has been established on the section. There is an intake air shaft on the section four crosscuts in by the fresh air base. This air shaft is shown on the mine map, which will be provided to you. We have sent personnel to the surface of the shaft and it is being sampled and monitored. Hand-held detector sample results show no contaminants at the surface of the shaft. The mine map that will be provided is a solid-line, up-to-date map as survey crews completed mapping the area yesterday.

The mine is ventilated by an exhaust fan on the surface, which must remain on and cannot be reversed. The fan is being guarded and sampled. The mine is walking height and supported by resin-grouted roof bolts. All electrical circuits to the 1st Right section have been disconnected, locked-out and guarded. The mine has experienced adverse roof conditions and problems with water. The mine liberates 1,670,000 cfm of methane per day.

A backup team is on site and another team is on standby. All state, federal, and local officials have been notified and are on site. You will have 90 minutes to work the problem. Mine maps and instructions will be provided.

FOUR CORNERS MINE RESCUE CONTEST

APRIL 28, 2010

PROBLEM

Account for all missing persons and bring all live persons to the Fresh Air Base.

Explore all accessible areas that can be done safely.

You have 90 minutes to work the problem.

Conscious Person Statement

To be read by Conscious Person when team enters
intersection in front of barricade

Help! Help!

Bill and I are in here.

Bill has passed out and I'm feeling dizzy.

PLEASE HURRY. WE NEED YOUR HELP!!

(No other information can be given at this time)

When the team rescues the live conscious person
and the initial assessment is conducted (RULE 12),
the team member will ask if he/she is okay or alright
and the person can say "I'm alright."

2010 – FARMINGTON, NM MINE RESCUE CONTEST INFORMATION

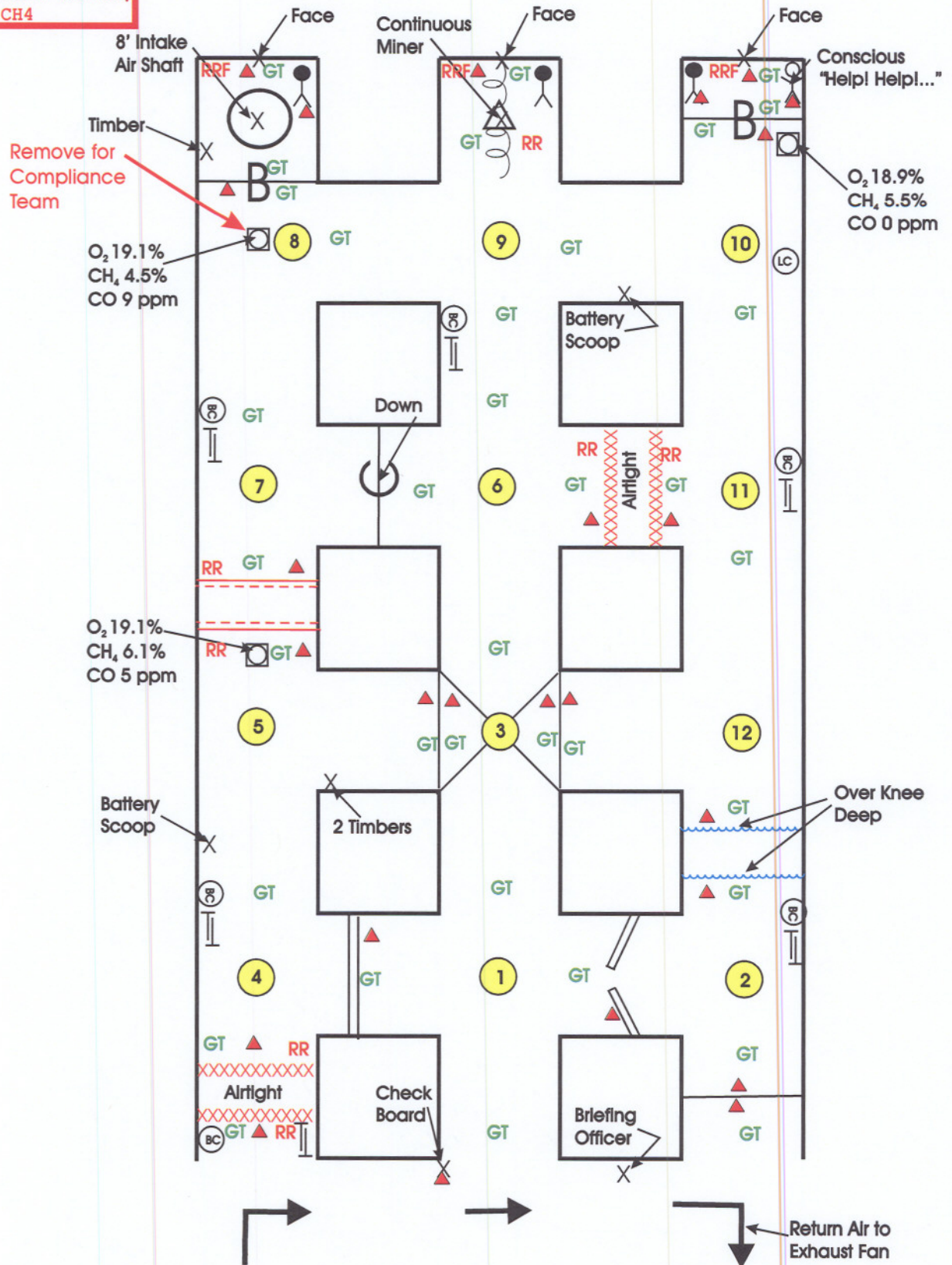
- A 90-MINUTE TIME LIMIT WILL APPLY. WARNINGS AT 20, 10, AND 2 MINUTES REMAINING WILL BE PROVIDED TO THE BRIEFING OFFICER BY THE JUDGE.
- THE FOLLOWING DISCOUNTS WILL APPLY IF TEAM FAILS TO COMPLETE PROBLEM IN 90 MINUTES:
 - **RULE 51** - 15 DISCOUNTS WILL BE ASSESSED FOR FAILURE TO FOLLOW WRITTEN INSTRUCTIONS IF PROBLEM IS NOT FINISHED BEFORE THE 90-MINUTE TIME LIMIT.
 - **RULE 5** – 2 POINTS FOR EACH OBJECT/CONDITION THAT SHOULD HAVE BEEN FOUND AND MAPPED IF PROBLEM HAD BEEN COMPLETED.
 - **RULE 32** – 10 DISCOUNTS FOR EACH MISSING PERSON NOT LOCATED.
 - **RULE 33** – 20 DISCOUNTS FOR EACH LIVE PERSON NOT BROUGHT TO THE FRESH AIR BASE.
 - **RULE 45.A.** – 4 DISCOUNTS FOR NOT EXPLORING ALL ACCESSIBLE AREAS OF THE MINE THAT CAN BE EXPLORED SAFELY IF PROBLEM REQUIRES SUCH.
- **RULE 43** – WHEN VENTILATION STRUCTURES ARE MOVED THEY MUST BE COMPLETELY DISMANTLED PRIOR TO MOVING. THE BRATTICE CLOTH MUST BE REMOVED FROM THE PVC PIPING AND THE TOP CROSS MEMBER MUST BE REMOVED FROM THE SIDE UPRIGHTS. THE SIDE UPRIGHTS AND BASES CAN REMAIN TOGETHER.
- **RULE 3** – AVERAGE WORKING TIME AND OVERTIME DISCOUNTS WILL NOT APPLY TO PROBLEMS WITH TIME LIMITS.
- **VELCRO STRAP/STOPPING DESIGNATIONS** – 3 STRAPS ON CROSS MEMBER INDICATE THE STOPPING IS INTACT WITH DOOR (IF APPLICABLE) CLOSED. 2 STRAPS ON CROSS MEMBER INDICATE THE STOPPING IS NOT FINISHED OR THE DOOR (IF APPLICABLE) IS OPEN.
- **AT LOCAL CONTESTS, THE MAP MAN CAN ACCOMPANY THE CAPTAIN AND JUDGES TO EXAMINE THE FIELD AFTER THE CLOCK IS STOPPED.** AT THE NATIONAL CONTEST, ONLY THE CAPTAIN MAY ACCOMPANY THE JUDGES.
- **RULES GOVERNING 2010 CONTESTS – RULE 1 – COMPARING MAPS AFTER FINAL VENT.** A) ONE PERSON CAN'T LOOK AT BOTH MAPS AT SAME TIME. B) ONE PERSON CAN LOOK AT ONE MAP AND THEN GO TO OTHER MAP AND HAVE CHANGES MADE. MAPS CANNOT BE SIDE BY SIDE TO MAKE COMPARISON.

FOUR CORNERS MINE RESCUE CONTEST - 2010

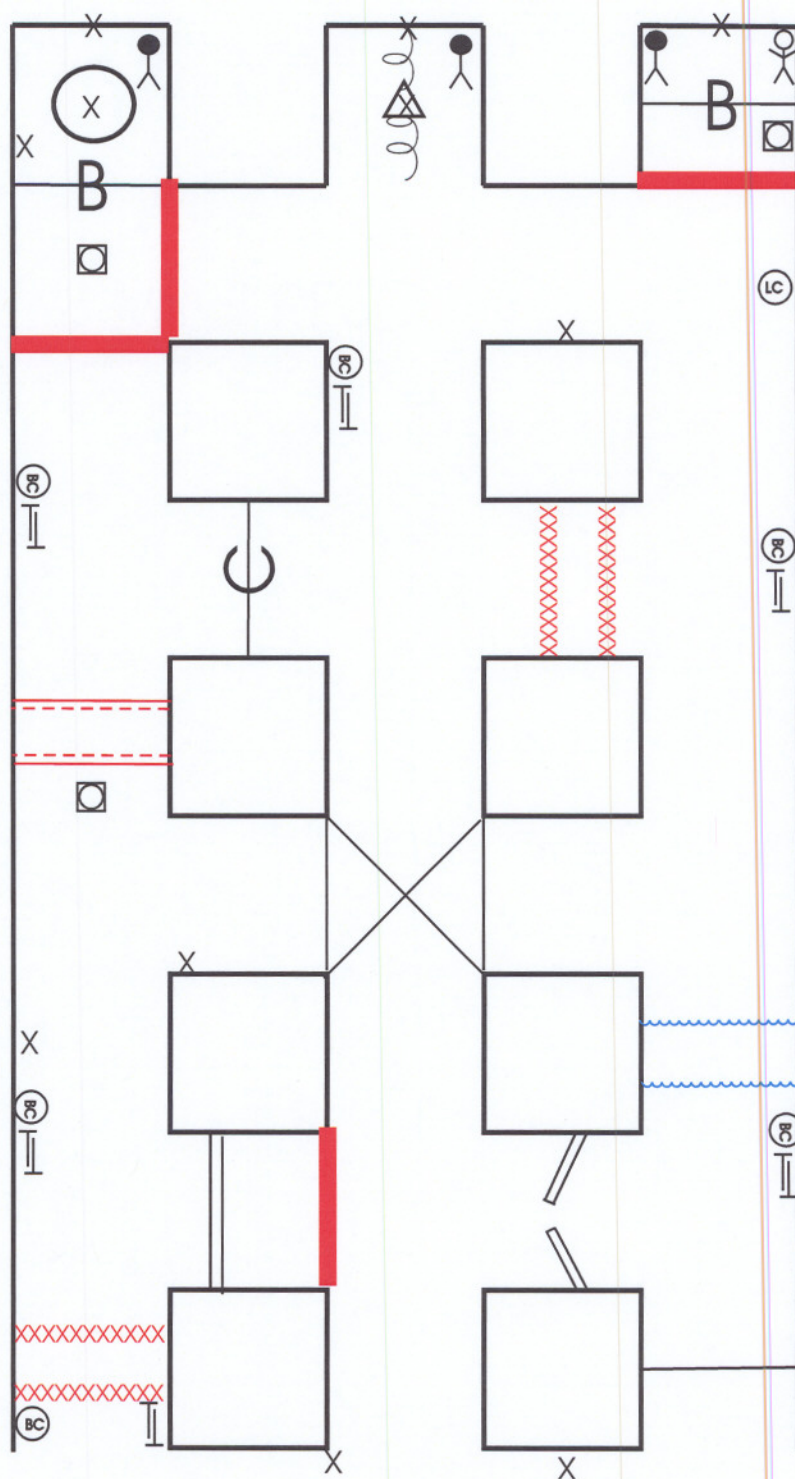
INDEX

- RR - ROOF & RIB TEST
- RRF - ROOF, RIB & FACE TEST
- ▲ - DATE & INITIALS
- GT - GAS TESTS FOR CO, O₂ & CH₄

TEAM STOP MAP



Airlocks Required



FOUR CORNERS MINE RESCUE CONTEST - 2010

STEP 1 VENTILATION

★ = Ignition Source

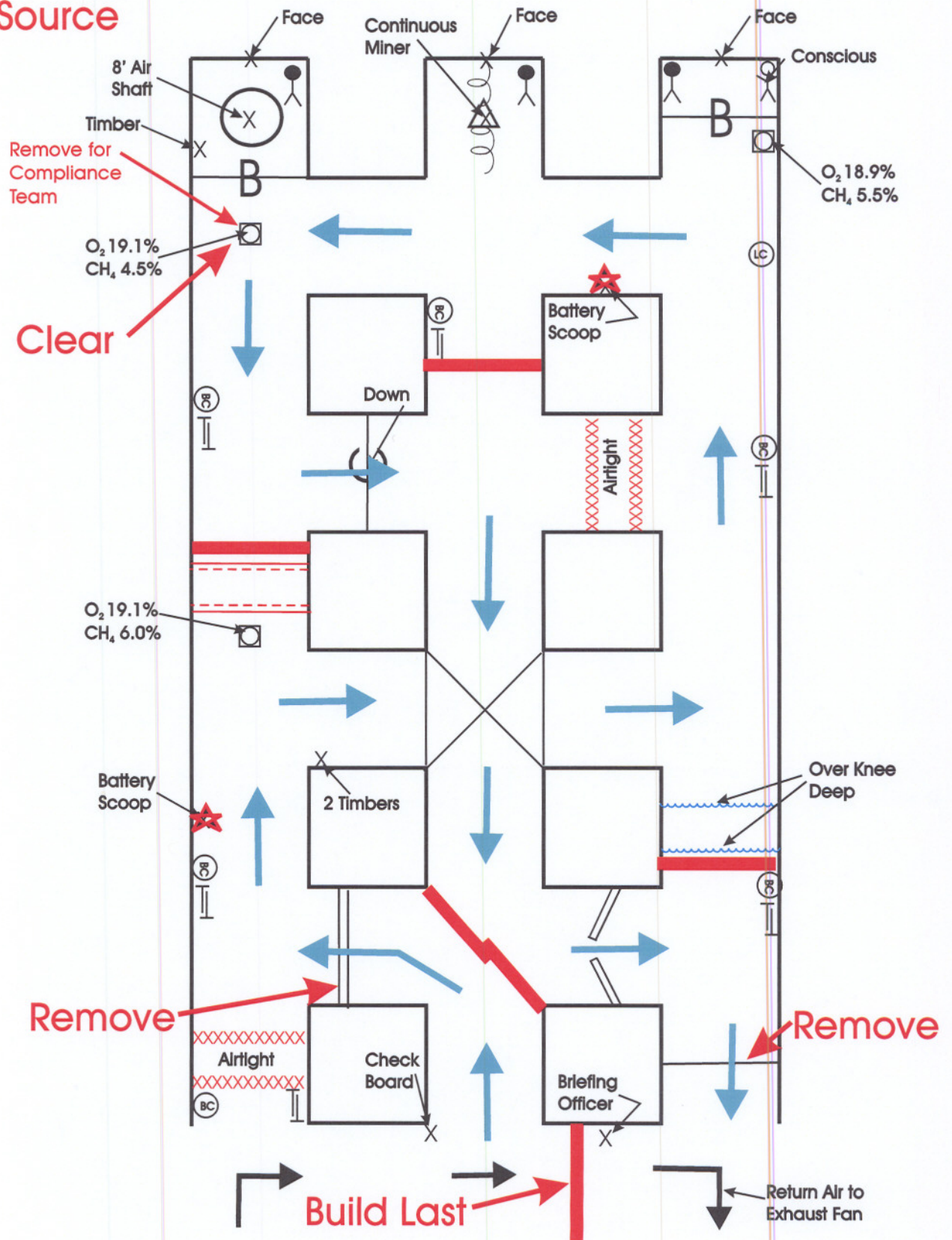
Remove for Compliance Team

Clear

Remove

Remove

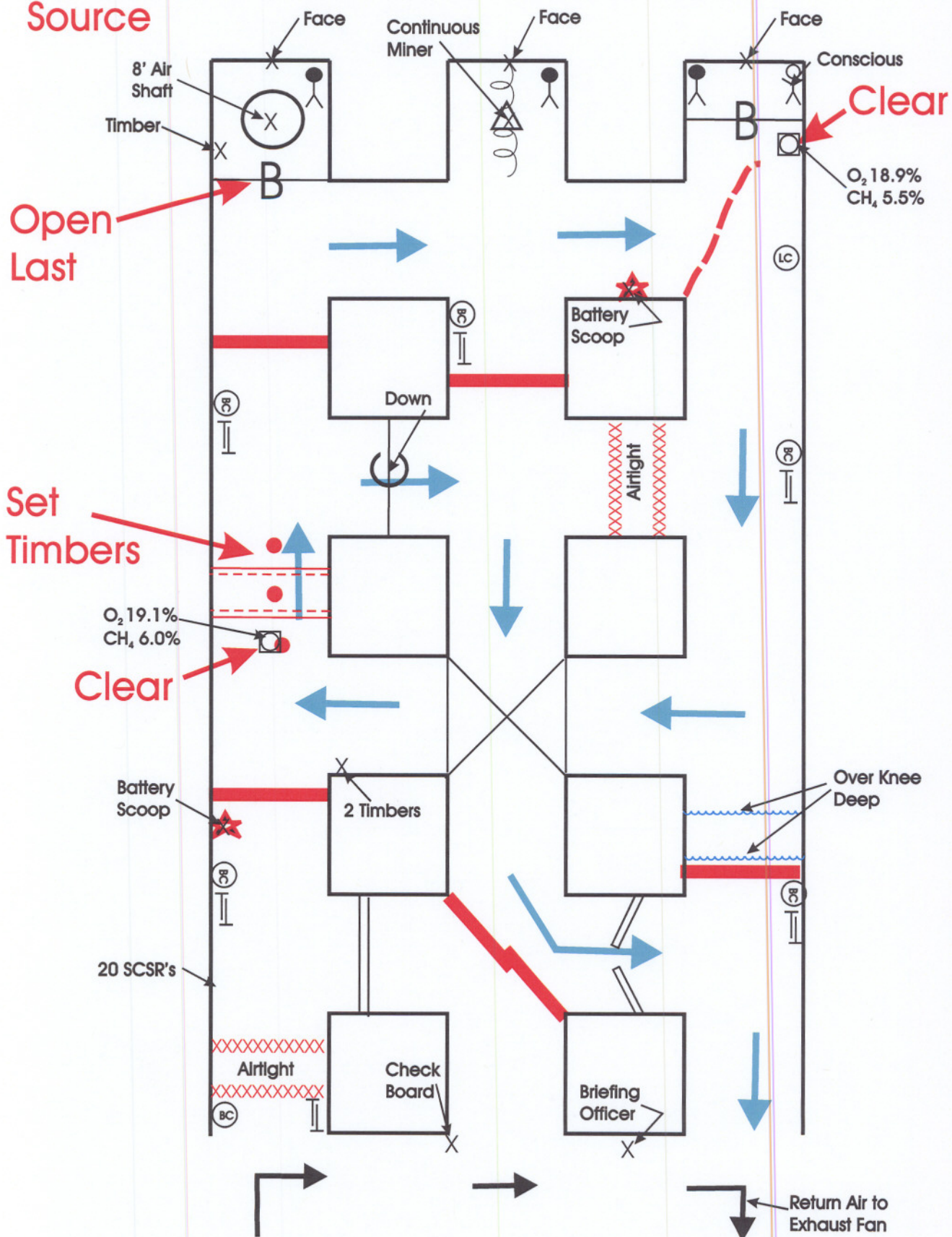
Build Last



FOUR CORNERS MINE RESCUE CONTEST - 2010

STEP 2 Ventilation and Compliance Team Vent

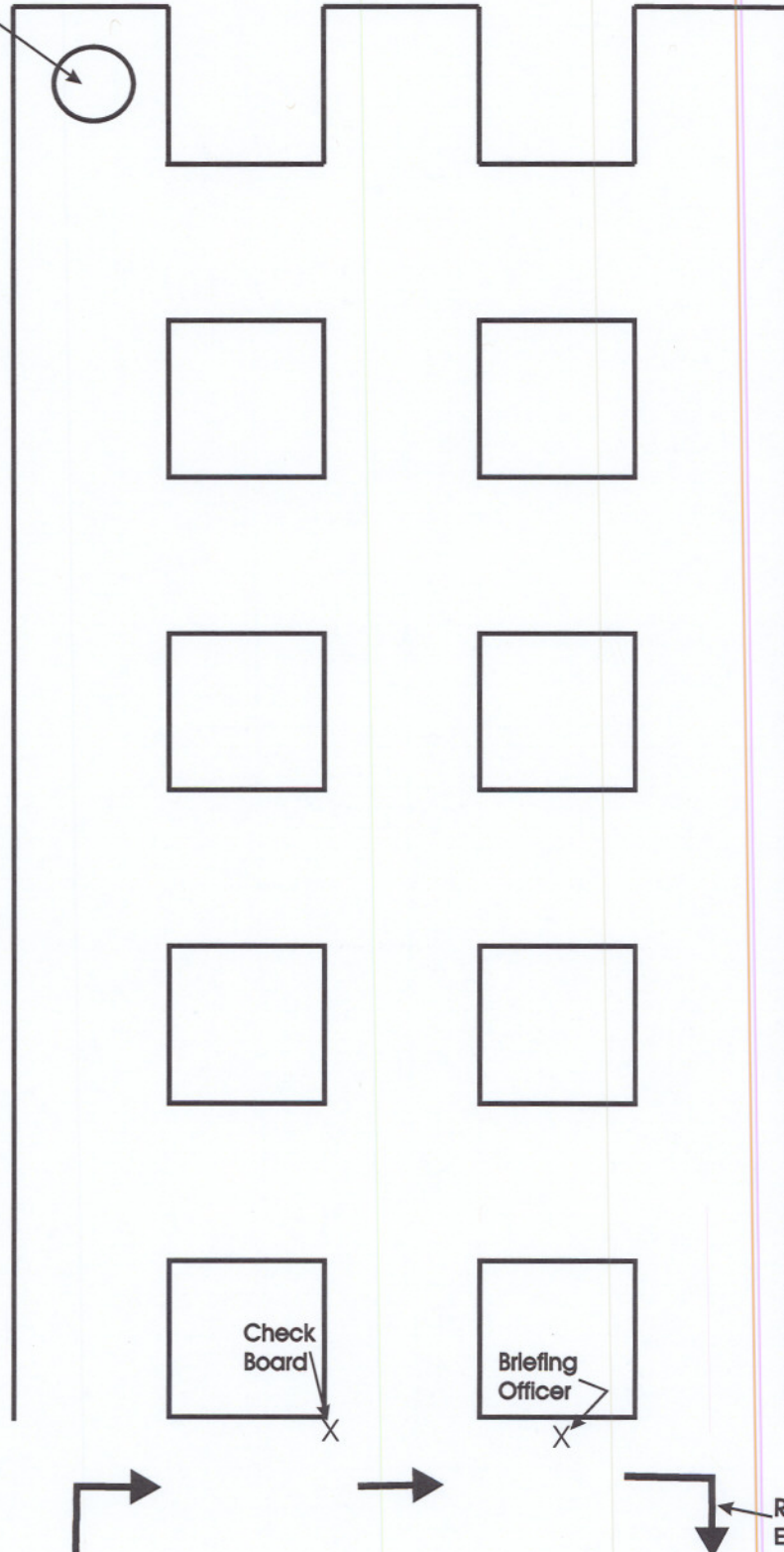
★ = Ignition Source



FOUR CORNERS MINE RESCUE CONTEST - 2010

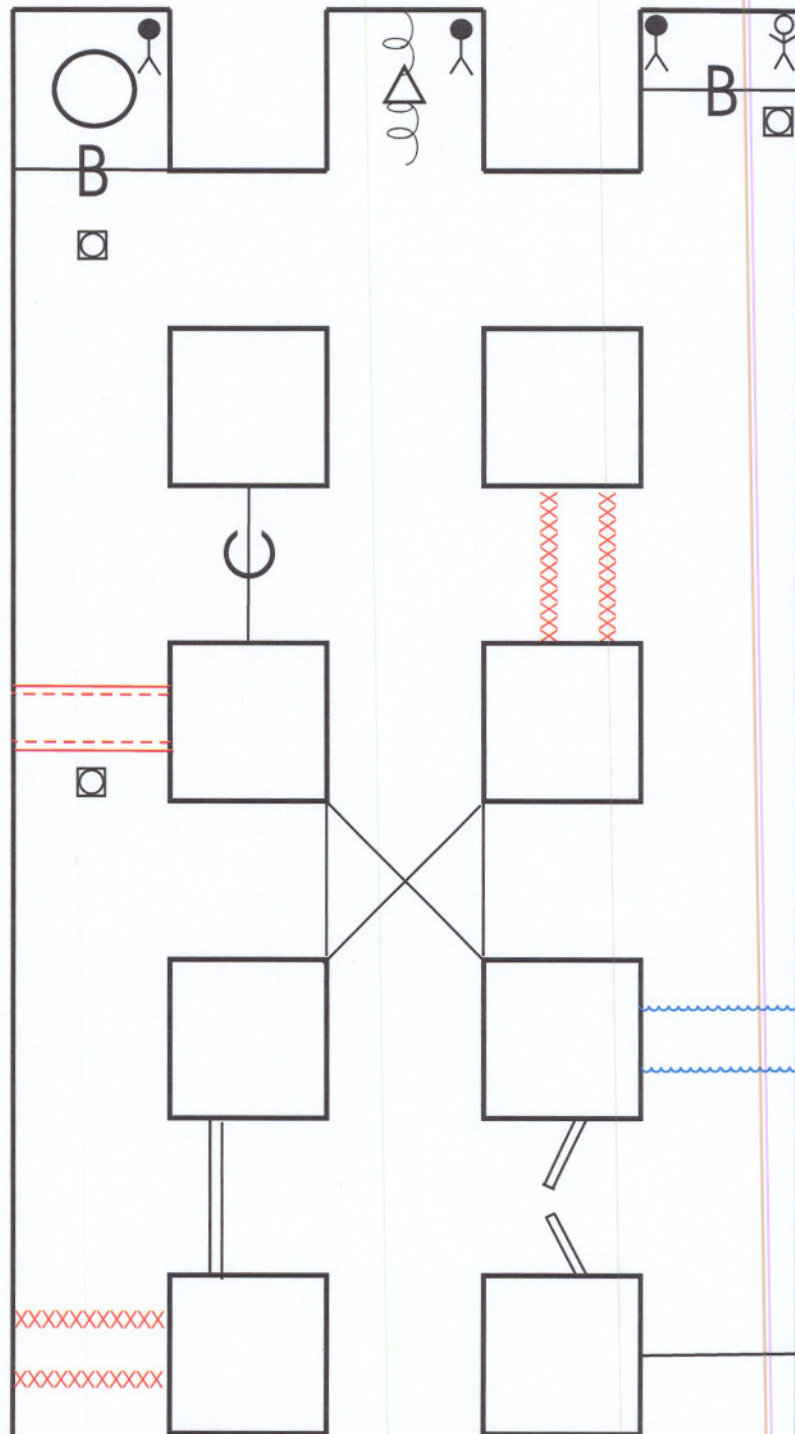
TEAM MAP - SCALE 1" = 10'

8' Air Shaft



FOUR CORNERS MINE RESCUE CONTEST - 2010

JUDGES BLANK MAP

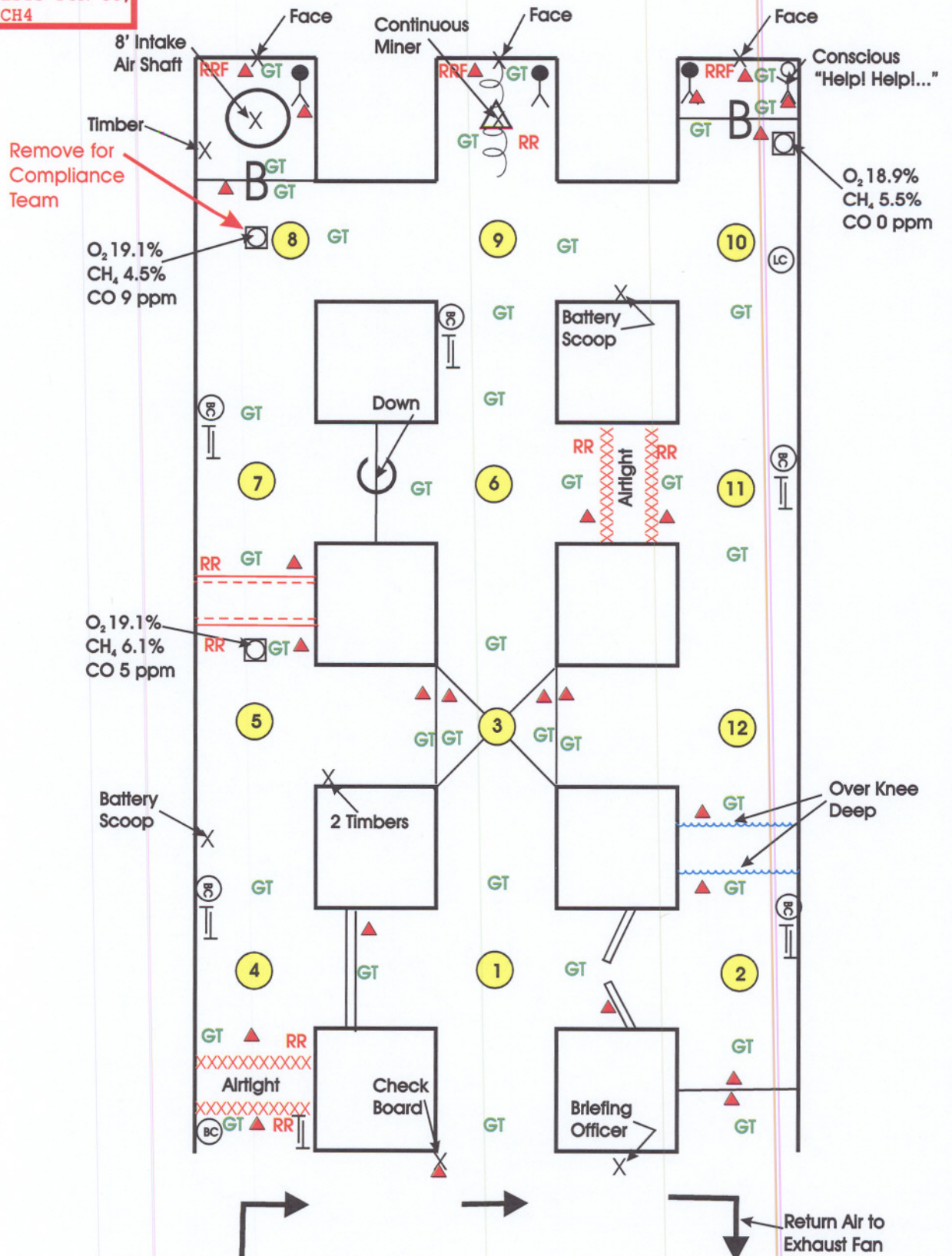


FOUR CORNERS MINE RESCUE CONTEST - 2010

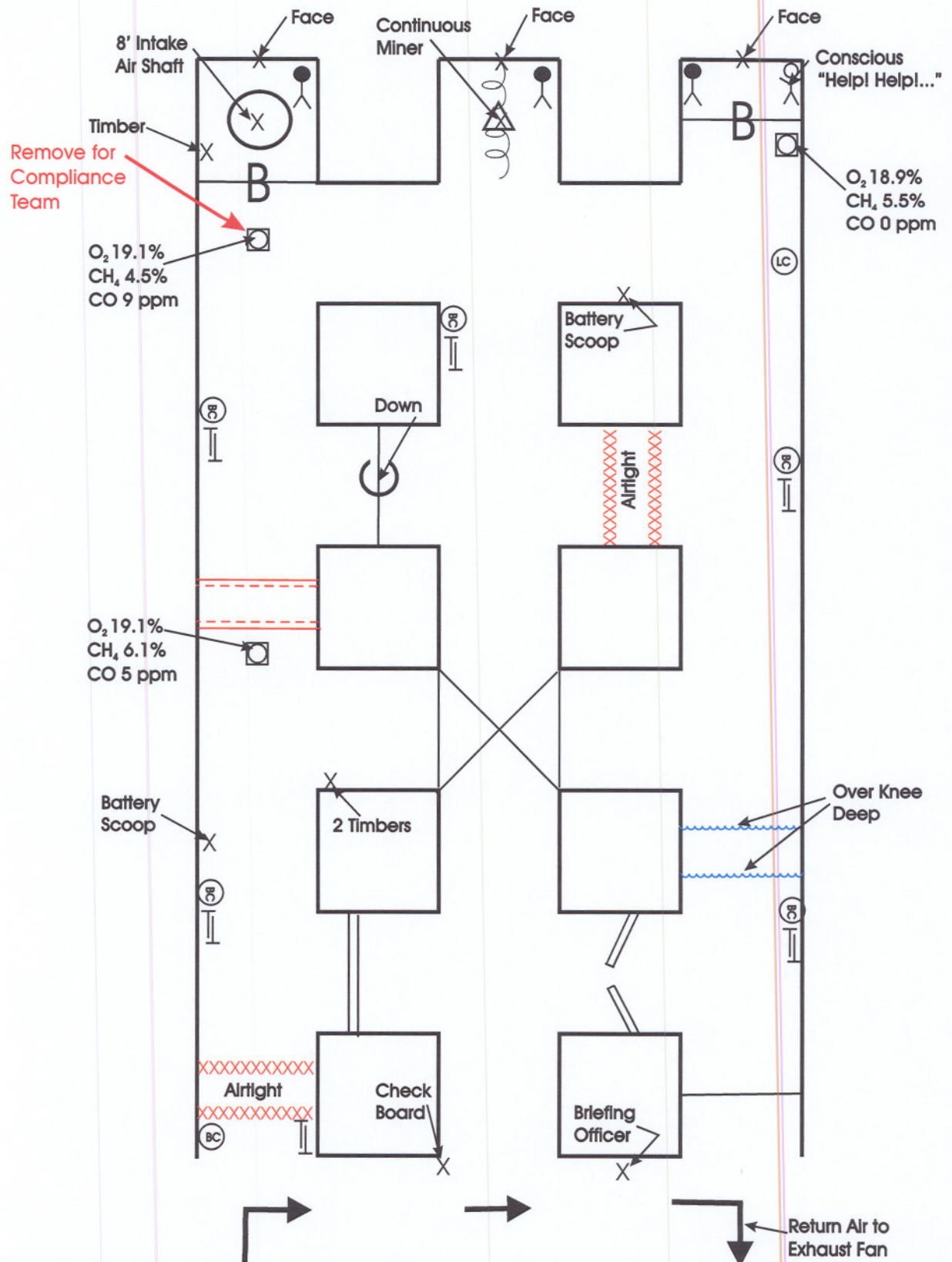
INDEX

- RR - ROOF & RIB TEST
- RRF - ROOF, RIB & FACE TEST
- ▲ - DATE & INITIALS
- GT - GAS TESTS FOR CO, O2 & CH4

JUDGES MAP



JUDGES VENT/FINAL MAP



PLACARD MAP

